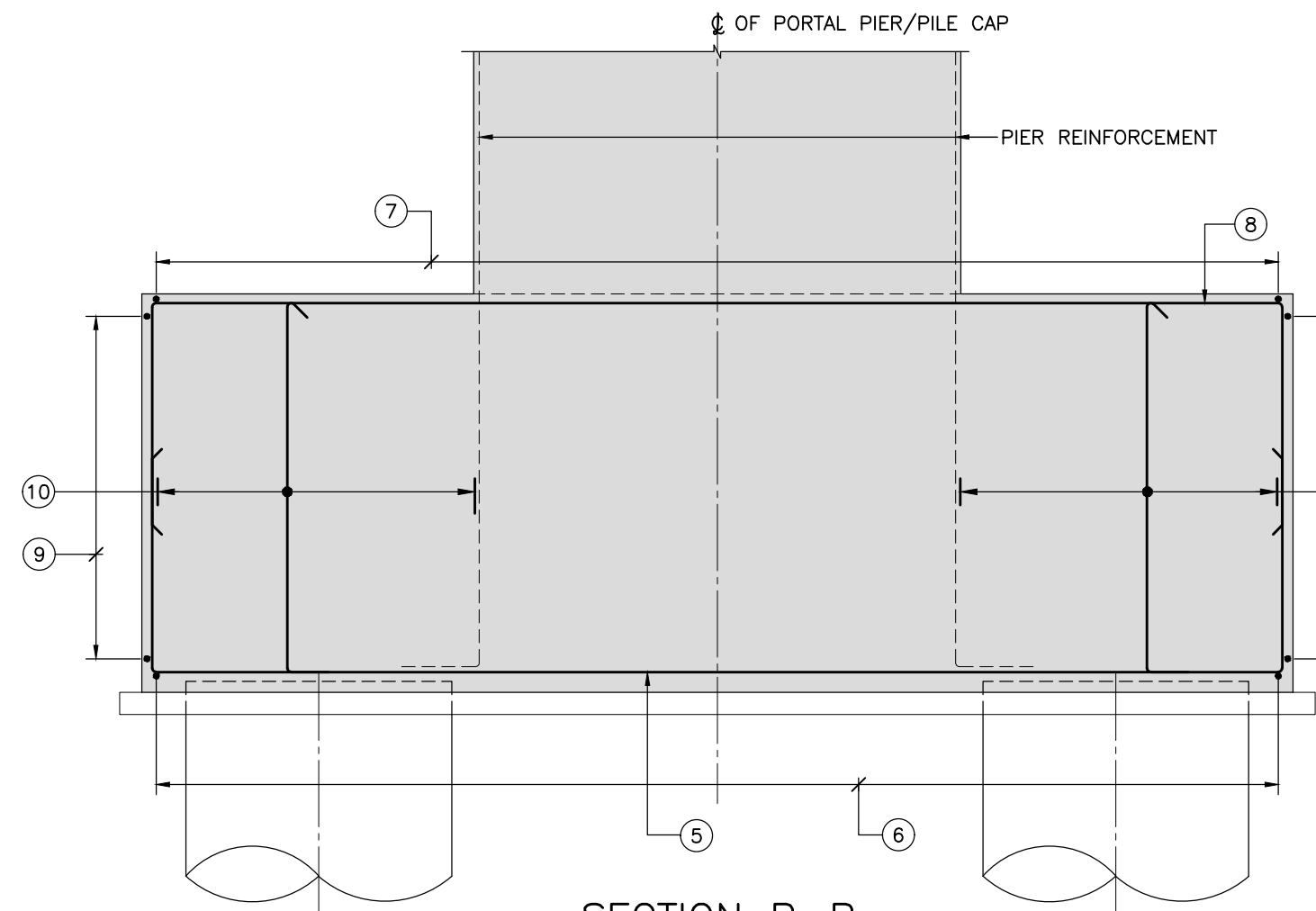
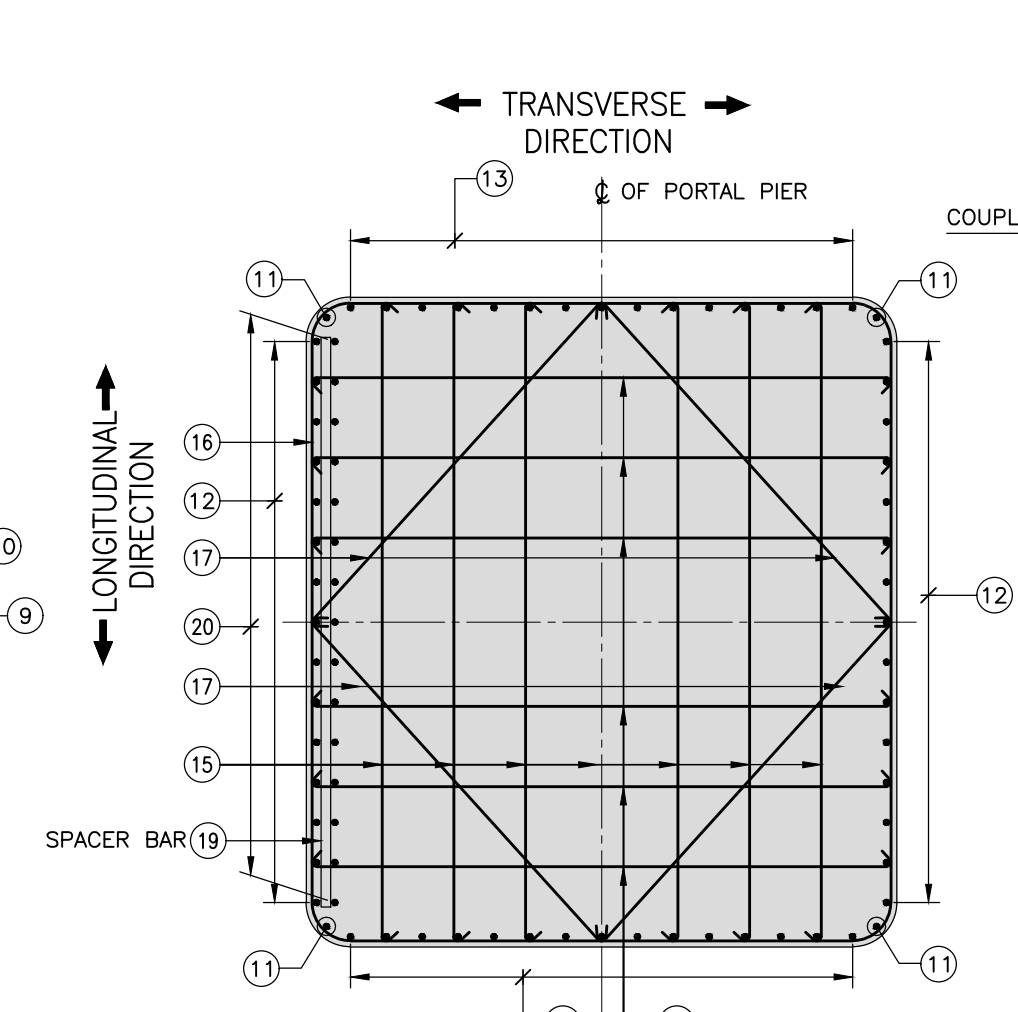


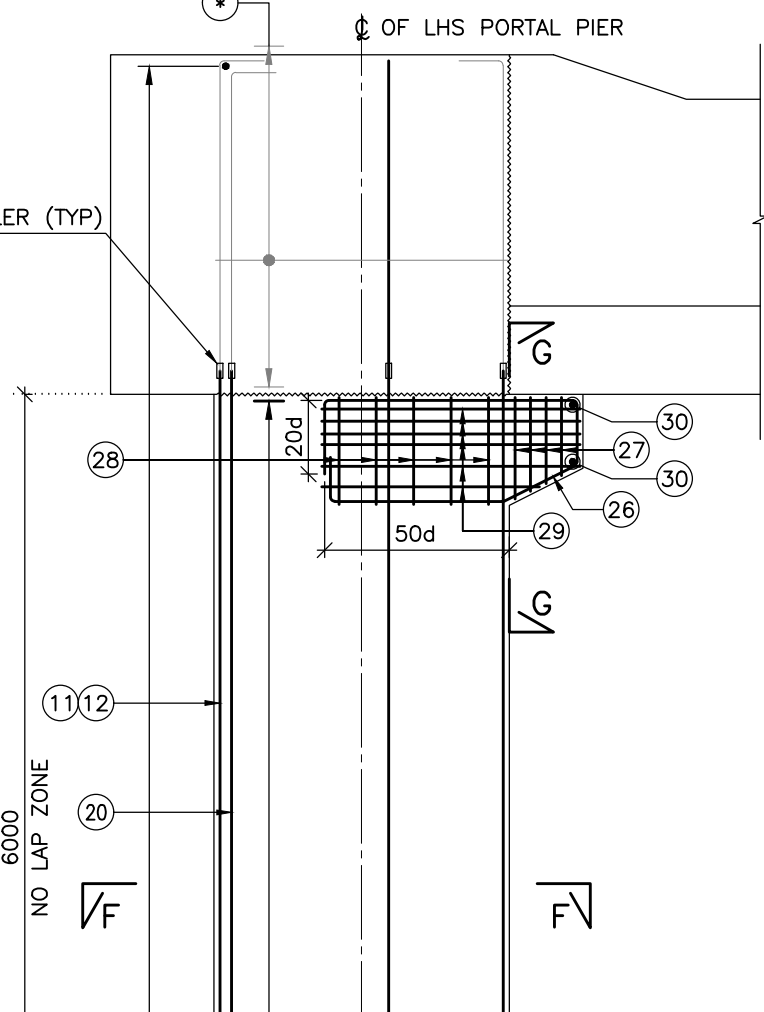
SECTION A-A
(PORTAL PIER REINF. NOT SHOWN FOR CLARITY)
(SCALE 1:30)



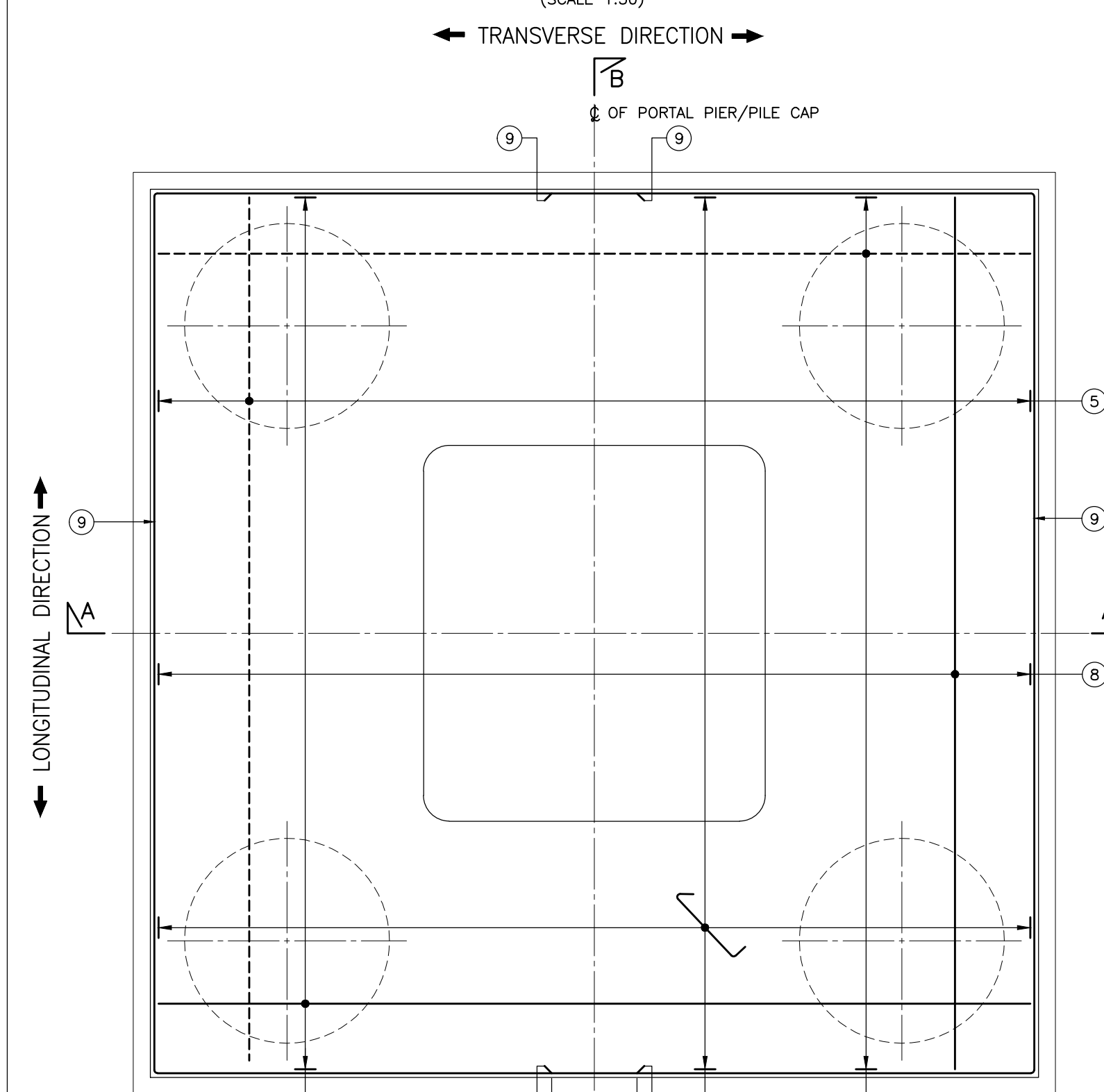
SECTION B-B
(PORTAL PIER REINF. NOT SHOWN FOR CLARITY)
(SCALE 1:30)



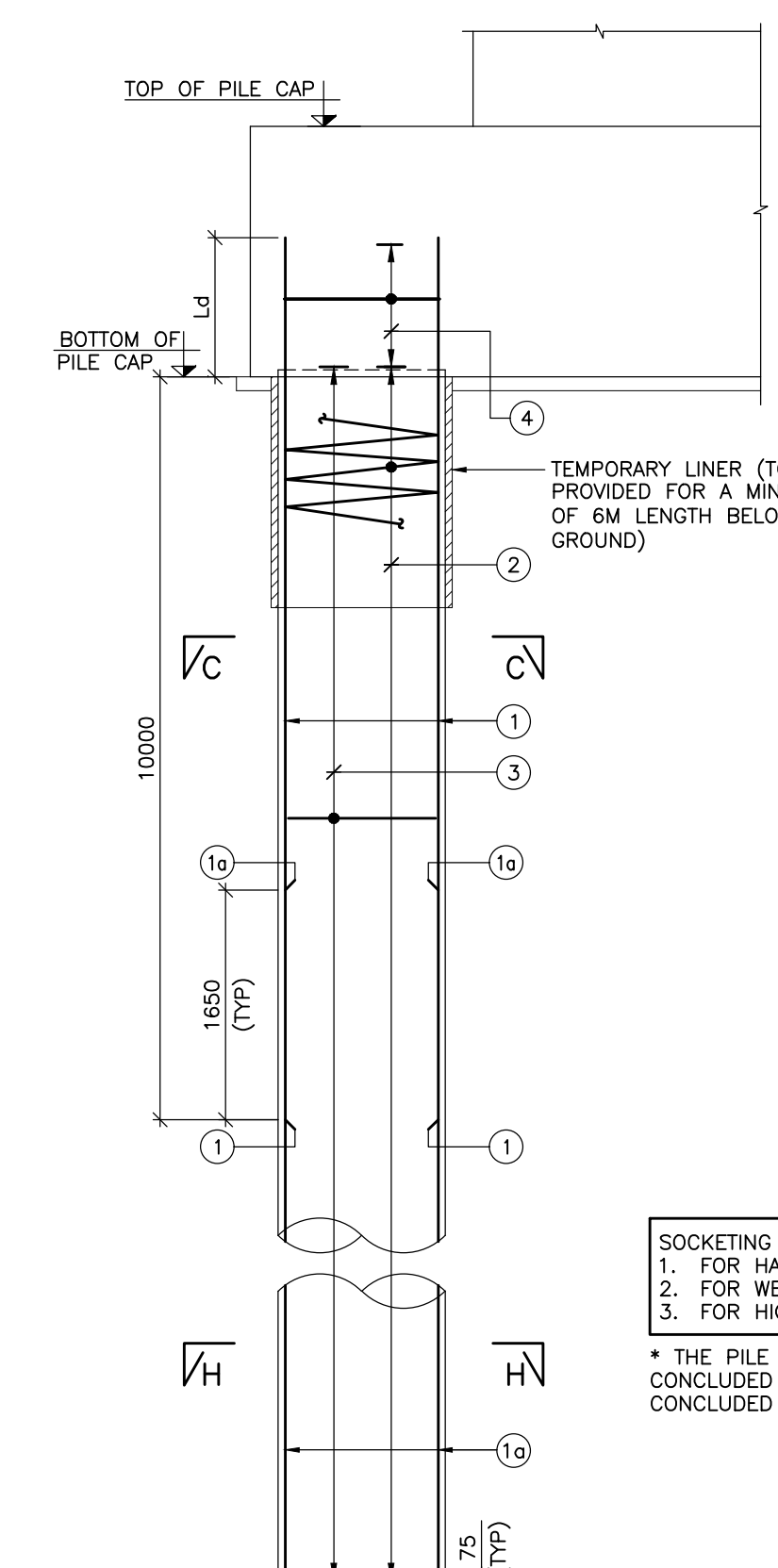
SECTION F-F
(SCALE 1:25)



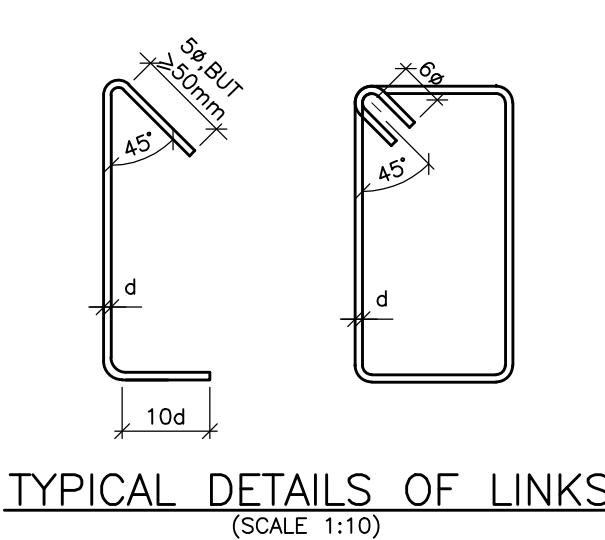
SECTION G-G
(SCALE 1:20)



PLAN OF LHS & RHS PILE CAP
(SCALE 1:30)

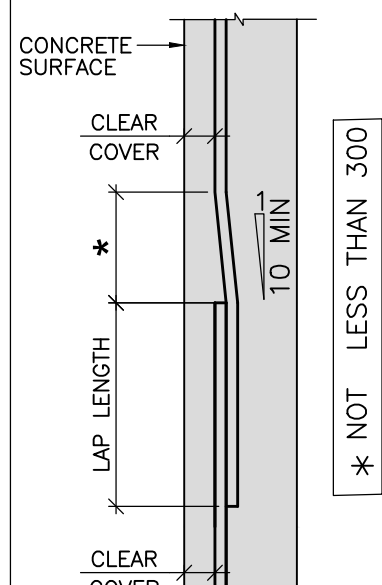


PILE REINFORCEMENT
(SCALE 1:50)

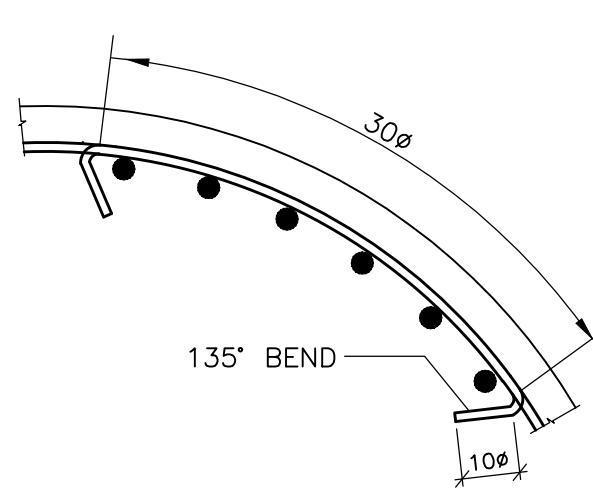


TYPICAL DETAILS OF LINKS
(SCALE 1:10)

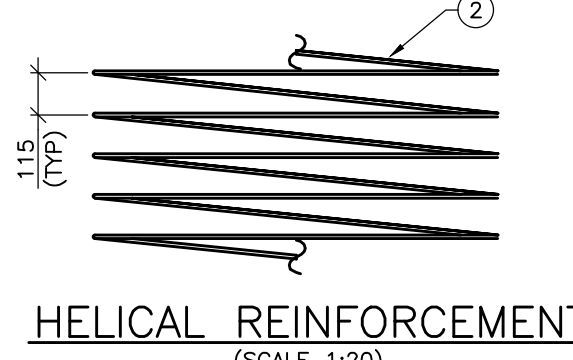
SOCKETING LENGTH:
1. FOR HARD ROCK-ONE TIMES DIA. OF PILE
2. FOR WEATHERED ROCK-2.5 TIMES DIA. OF PILE
3. FOR HIGHLY WEATHERED ROCK-6 TIMES DIA. OF PILE
* THE PILE LENGTH HAS BEEN DERIVED BASED ON THE CONCLUDED PILE LOAD TEST FOR SIMILAR STRATA & CONCLUDED GC LETTER BY 2656 & 2810.



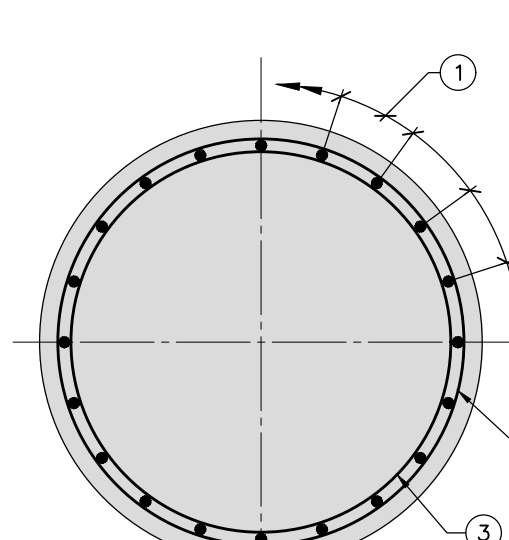
LAPPING DETAIL
(SCALE 1:10)



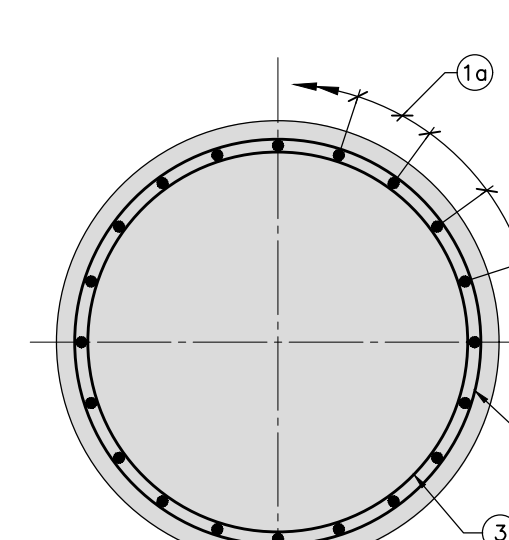
TYPICAL DETAIL OF ANCHORAGE OF TIES
(SCALE 1:10)



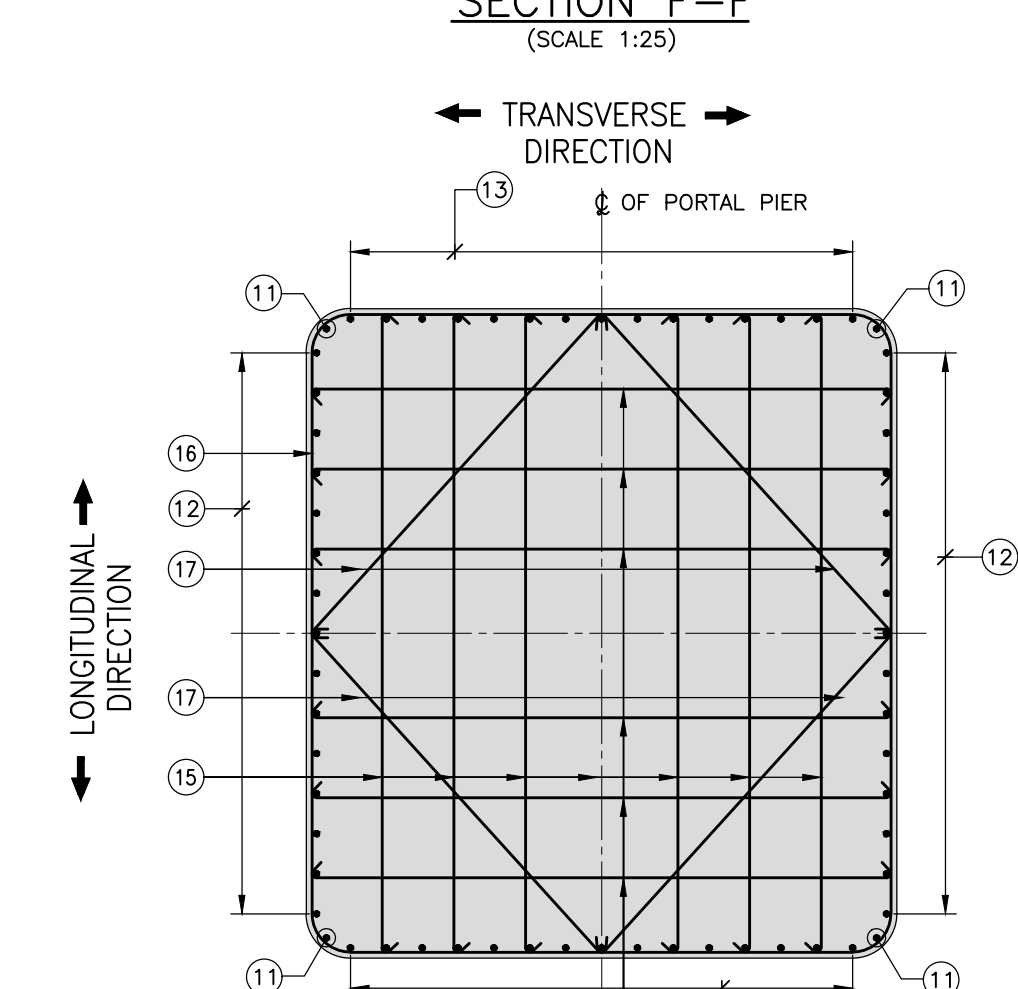
HELICAL REINFORCEMENT
(SCALE 1:20)



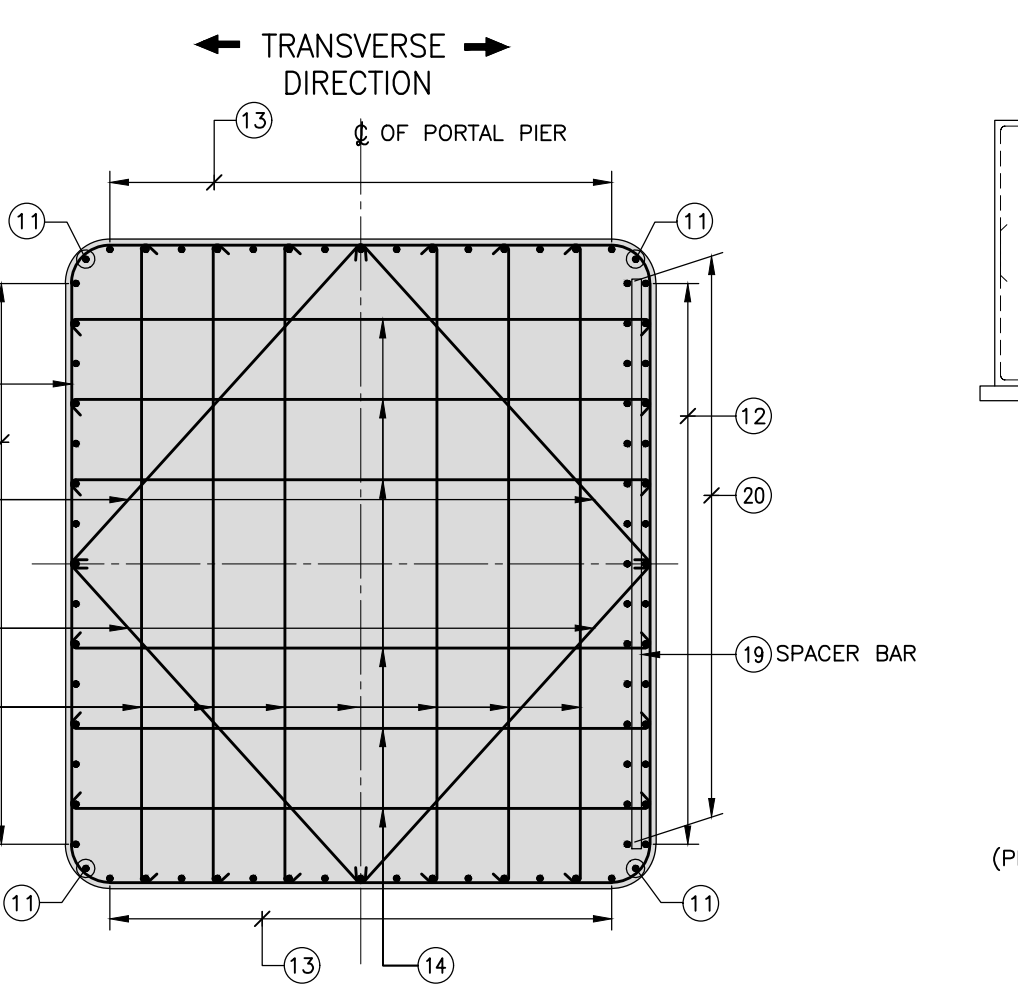
SECTION C-C
(SCALE 1:20)



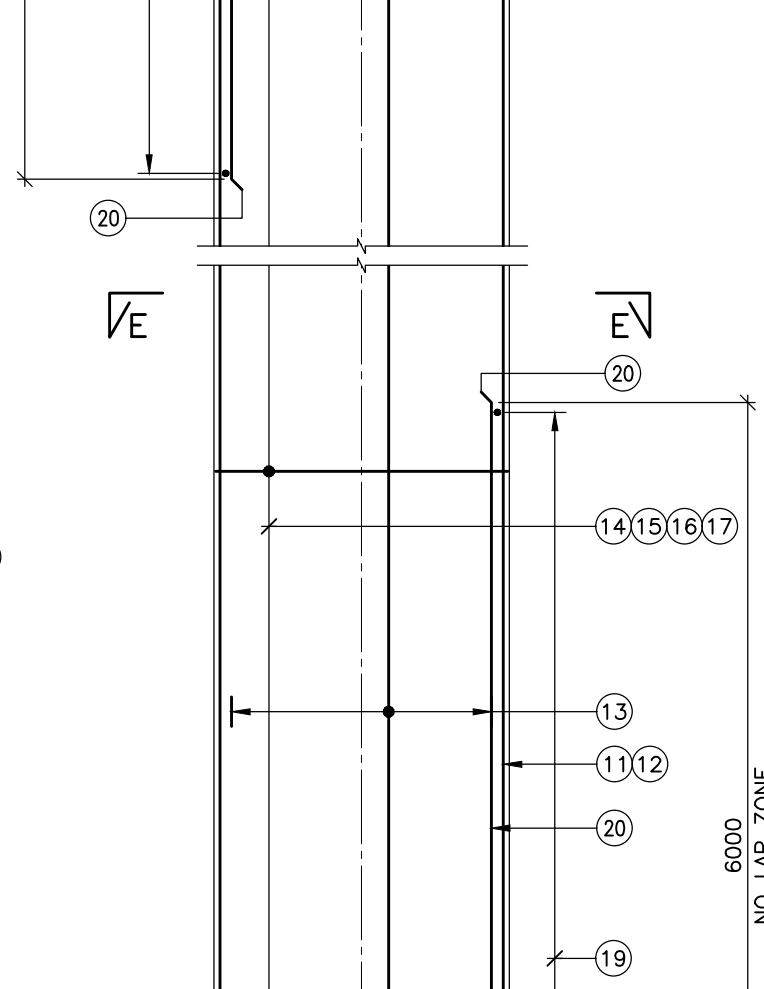
SECTION H-H
(SCALE 1:20)



SECTION E-E
(SCALE 1:25)



SECTION D-D
(SCALE 1:25)



SECTIONAL ELEVATION OF PORTAL LHS & RHS PIER
(PILE, PILE CAP & PIER CAP REINFORCEMENT NOT SHOWN FOR CLARITY)
(* REFER DETAILS DRAWING FOR PORTAL BEAM)
(SCALE 1:50)

- NOTES:
- ALL DIMENSIONS ARE IN MILLIMETRES AND LEVELS ARE IN METER, UNLESS OTHERWISE SPECIFIED.
 - DIMENSIONS ARE NOT TO BE SCALED. ONLY WRITTEN DIMENSIONS SHALL BE FOLLOWED.
 - THIS DRAWING SHOULD BE READ IN CONJUNCTION WITH GENERAL ARRANGEMENT DRAWINGS AND RAIL ALIGNMENT DRAWINGS.
 - IF ANY AMBIGUITY IS FOUND IN DRAWINGS OR AT SITE, THE SAME SHALL BE BROUGHT TO DESIGNER'S/ ENGINEER'S NOTICE BEFORE EXECUTION.
 - REINFORCEMENT STEEL SHALL BE HYSD BARS OF GRADE Fe 500 CONFORMING TO IS:1786-2008
 - GRADE OF CONCRETE SHALL BE AS FOLLOWS:
LEVELING COURSE : RCC M20
PILE : RCC M35
PILE CAP : RCC M35
PIER : RCC M50
 - CLEAR COVER TO ALL REINFORCEMENT SHALL BE:
PILE : 75 mm
PILE CAP : 75 mm
PIER : 50 mm
 - DEVELOPMENT LENGTH AND LAP LENGTH SHALL BE AS GIVEN BELOW :
- | GRADE OF CONCRETE | M35 | M50 |
|--------------------|-----------|-----------|
| DEVELOPMENT LENGTH | 46 ϕ | 41 ϕ |
| LAP LENGTH | 65 ϕ | 58 ϕ |
- WHERE ϕ IS THE DIA. OF BAR.
- NOT MORE THAN 50% OF THE BAR SHALL BE LAPPED AT ANY LOCATION.
 - FOR NUMBER OF REINFORCEMENT, REFER TO SCHEDULE OF REINFORCEMENT ONLY.

- LEGENDS:
- TOP REINFORCEMENT
 - BOTTOM REINFORCEMENT
 - H --- HYSD Fe500 BARS
 - REINF --- REINFORCEMENT
 - Ld --- DEVELOPMENT LENGTH

REFERENCE DRAWINGS :

- 022077-BSRP-CR2-C-VD-0-30-1601.....DIMENSION DETAILS OF FOUNDATION AND SUBSTRUCTURE FOR PORTAL PIER DPP211
- 022077-BSRP-CR2-C-VD-0-30-1621.....DIMENSION DETAILS OF PORTAL BEAM FOR PORTAL PIER DPP211
- 022077-BSRP-CR2-C-VD-0-30-1647.....PRESTRESSING DETAILS OF PORTAL BEAM AT PORTAL PIER DPP211 (SHEET 1 & 2)
- 022077-BSRP-CR2-C-VD-0-30-1724.....REINFORCEMENT DETAILS OF PRECAST POST TENSIONED PORTAL BEAM FOR PORTAL PIER DPP211 (SHEET 1 OF 2)
- 022077-BSRP-CR2-C-VD-0-30-1725.....REINFORCEMENT DETAILS OF PRECAST POST TENSIONED PORTAL BEAM FOR PORTAL PIER DPP211 (SHEET 2 OF 2)

SCHEDULE OF REINFORCEMENT

| ITEM | BAR MARK | BAR DIA. | SHAPE | TOTAL Nos./ SPACINGS | REMARKS |
|----------|----------|----------|-------|---------------------------------|------------------------|
| PILE | 1 | 25 | | 20 NOS | VERTICAL BAR |
| | 19 | 20 | | 20 NOS | VERTICAL BAR |
| | 2 | 10 | | 115 PITCH HELICAL REINFORCEMENT | |
| | 3 | 16 | ○ | 1500 c/c | RING |
| PILE CAP | 4 | 16 | ○ | 300 c/c | RING |
| | 5 | 25 | U | 125 c/c | BOTTOM BAR |
| | 6 | 25 | U | 125 c/c | BOTTOM BAR |
| | 7 | 25 | U | 125 c/c | TOP BAR |
| PILE CAP | 8 | 25 | U | 125 c/c | TOP BAR |
| | 9 | 12 | U | 125 c/c | SIDE FACE BAR |
| | 10 | 16 | + | 250 c/c | LONGITUDINAL DIRECTION |
| | 10 | 16 | + | 250 c/c | TRANSVERSE DIRECTION |
| PIER | 11 | 32 | U | 4 Nos. | |
| | 12 | 32 | U | 2x15 Nos. | |
| | 13 | 25 | U | 2x15 Nos. | |
| | 14 | 10 | | 150 c/c | 6 LEGGED |
| | 15 | 10 | | 150 c/c | 6 LEGGED |
| | 16 | 10 | | 150 c/c | 2 LEGGED |
| | 17 | 10 | | 150 c/c | |
| | 18 | 10 | | 150 c/c | 2 LEGGED |
| | 19 | 32 | U | 1000 c/c | SPACER BAR |
| | 20 | 20 | U | 2x15 Nos. | |
| | 21 & 25 | | | | NOT USED |
| CORREL | 26 | 25 | U | 12 Nos. | |
| | 27 | 10 | | 4 Nos. | 8 LEGGED |
| | 28 | 10 | | 5 Nos. | 8 LEGGED |
| | 29 | 12 | | 6 Nos. | 8 LEGGED |
| CORREL | 30 | 20 | U | 2 Nos. | ANCHOR BAR |

| | | | | | | | | | | | |
|---|--|---|--|---|--|---|--|---|--|---|--|
| NOTES: | | LEGEND: | | REFERENCE DRAWINGS: | | REFERENCE DOCUMENTS: | | KEY PLAN | | STATION BOX KEY PLAN | |
| 1. 022077-BSRP-CR2-C-VD-0-30-1601.....DIMENSION DETAILS OF FOUNDATION AND SUBSTRUCTURE FOR PORTAL PIER DPP211 | | 2. 022077-BSRP-CR2-C-VD-0-30-1621.....DIMENSION DETAILS OF PORTAL BEAM FOR PORTAL PIER DPP211 | | 3. 022077-BSRP-CR2-C-VD-0-30-1647.....PRESTRESSING DETAILS OF PORTAL BEAM AT PORTAL PIER DPP211 (SHEET 1 & 2) | | 4. 022077-BSRP-CR2-C-VD-0-30-1724.....REINFORCEMENT DETAILS OF PRECAST POST TENSIONED PORTAL BEAM FOR PORTAL PIER DPP211 (SHEET 1 OF 2) | | 5. 022077-BSRP-CR2-C-VD-0-30-1725.....REINFORCEMENT DETAILS OF PRECAST POST TENSIONED PORTAL BEAM FOR PORTAL PIER DPP211 (SHEET 2 OF 2) | | 6. 022077-BSRP-CR2-C-VD-0-30-1726.....REINFORCEMENT DETAILS OF PRECAST POST TENSIONED PORTAL BEAM FOR PORTAL PIER DPP211 (SHEET 3 OF 2) | |
| 7. 022077-BSRP-CR2-C-VD-0-30-1727.....REINFORCEMENT DETAILS OF PRECAST POST TENSIONED PORTAL BEAM FOR PORTAL PIER DPP211 (SHEET 4 OF 2) | | 8. 022077-BSRP-CR2-C-VD-0-30-1728.....REINFORCEMENT DETAILS OF PRECAST POST TENSIONED PORTAL BEAM FOR PORTAL PIER DPP211 (SHEET 5 OF 2) | | 9. 022077-BSRP-CR2-C-VD-0-30-1729.....REINFORCEMENT DETAILS OF PRECAST POST TENSIONED PORTAL BEAM FOR PORTAL PIER DPP211 (SHEET 6 OF 2) | | 10. 022077-BSRP-CR2-C-VD-0-30-1730.....REINFORCEMENT DETAILS OF PRECAST POST TENSIONED PORTAL BEAM FOR PORTAL PIER DPP211 (SHEET 7 OF 2) | | 11. 022077-BSRP-CR2-C-VD-0-30-1731.....REINFORCEMENT DETAILS OF PRECAST POST TENSIONED PORTAL BEAM FOR PORTAL PIER DPP211 (SHEET 8 OF 2) | | 12. 022077-BSRP-CR2-C-VD-0-30-1732.....REINFORCEMENT DETAILS OF PRECAST POST TENSIONED PORTAL BEAM FOR PORTAL PIER DPP211 (SHEET 9 OF 2) | |
| 13. 022077-BSRP-CR2-C-VD-0-30-1733.....REINFORCEMENT DETAILS OF PRECAST POST TENSIONED PORTAL BEAM FOR PORTAL PIER DPP211 (SHEET 10 OF 2) | | 14. 022077-BSRP-CR2-C-VD-0-30-1734.....REINFORCEMENT DETAILS OF PRECAST POST TENSIONED PORTAL BEAM FOR PORTAL PIER DPP211 (SHEET 11 OF 2) | | 15. 022077-BSRP-CR2-C-VD-0-30-1735.....REINFORCEMENT DETAILS OF PRECAST POST TENSIONED PORTAL BEAM FOR PORTAL PIER DPP211 (SHEET 12 OF 2) | | 16. 022077-BSRP-CR2-C-VD-0-30-1736.....REINFORCEMENT DETAILS OF PRECAST POST TENSIONED PORTAL BEAM FOR PORTAL PIER DPP211 (SHEET 13 OF 2) | | 17. 022077-BSRP-CR2-C-VD-0-30-1737.....REINFORCEMENT DETAILS OF PRECAST POST TENSIONED PORTAL BEAM FOR PORTAL PIER DPP211 (SHEET 14 OF 2) | | 18. 022077-BSRP-CR2-C-VD-0-30-1738.....REINFORCEMENT DETAILS OF PRECAST POST TENSIONED PORTAL BEAM FOR PORTAL PIER DPP211 (SHEET 15 OF 2) | |
| 19. 022077-BSRP-CR2-C-VD-0-30-1739.....REINFORCEMENT DETAILS OF PRECAST POST TENSIONED PORTAL BEAM FOR PORTAL PIER DPP211 (SHEET 16 OF 2) | | 20. 022077-BSRP-CR2-C-VD-0-30-1740.....REINFORCEMENT DETAILS OF PRECAST POST TENSIONED PORTAL BEAM FOR PORTAL PIER DPP211 (SHEET 17 OF 2) | | 21. 022077-BSRP-CR2-C-VD-0-30-1741.....REINFORCEMENT DETAILS OF PRECAST POST TENSIONED PORTAL BEAM FOR PORTAL PIER DPP211 (SHEET 18 OF 2) | | 22. 022077-BSRP-CR2-C-VD-0-30-1742.....REINFORCEMENT DETAILS OF PRECAST POST TENSIONED PORTAL BEAM FOR PORTAL PIER DPP211 (SHEET 19 OF 2) | | 23. 022077-BSRP-CR2-C-VD-0-30-1743.....REINFORCEMENT DETAILS OF PRECAST POST TENSIONED PORTAL BEAM FOR PORTAL PIER DPP211 (SHEET 20 OF 2) | | 24. 022077-BSRP-CR2-C-VD-0-30-1744.....REINFORCEMENT DETAILS OF PRECAST POST TENSIONED PORTAL BEAM FOR PORTAL PIER DPP211 (SHEET 21 OF 2) | |
| 25. 022077-BSRP-CR2-C-VD-0-30-1745.....REINFORCEMENT DETAILS OF PRECAST POST TENSIONED PORTAL BEAM FOR PORTAL PIER DPP211 (SHEET 22 OF 2) | | 26. 022077-BSRP-CR2-C-VD-0-30-1746.....REINFORCEMENT DETAILS OF PRECAST POST TENSIONED PORTAL BEAM FOR PORTAL PIER DPP211 (SHEET 23 OF 2) | | 27. 022077-BSRP-CR2-C-VD-0-30-1747.....REINFORCEMENT DETAILS OF PRECAST POST TENSIONED PORTAL BEAM FOR PORTAL PIER DPP211 (SHEET 24 OF 2) | | 28. 022077-BSRP-CR2-C-VD-0-30-1748.....REINFORCEMENT DETAILS OF PRECAST POST TENSIONED PORTAL BEAM FOR PORTAL PIER DPP211 (SHEET 25 OF 2) | | 29. 022077-BSRP-CR2-C-VD-0-30-1749.....REINFORCEMENT DETAILS OF PRECAST POST TENSIONED PORTAL BEAM FOR PORTAL PIER DPP211 (SHEET 26 OF 2) | | 30. 022077-BSRP-CR2-C-VD-0-30-1750.....REINFORCEMENT DETAILS OF PRECAST POST TENSIONED PORTAL BEAM FOR PORTAL PIER DPP211 (SHEET 27 OF 2) | |
| 31. 022077-BSRP-CR2-C-VD-0-30-1751.....REINFORCEMENT DETAILS OF PRECAST POST TENSIONED PORTAL BEAM FOR PORTAL PIER DPP211 (SHEET 28 OF 2) | | 32. 022077-BSRP-CR2-C-VD-0-30-1752.....REINFORCEMENT DETAILS OF PRECAST POST TENSIONED PORTAL BEAM FOR PORTAL PIER DPP211 (SHEET 29 OF 2) | | 33. 022077-BSRP-CR2-C-VD-0-30-1753.....REINFORCEMENT DETAILS OF PRECAST POST TENSIONED PORTAL BEAM FOR PORTAL PIER DPP211 (SHEET 30 OF 2) | | 34. 022077-BSRP-CR2-C-VD-0-30-1754.....REINFORCEMENT DETAILS OF PRECAST POST TENSIONED PORTAL BEAM FOR PORTAL PIER DPP211 (SHEET 31 OF 2) | | 35. 022077-BSRP-CR2-C-VD-0-30-1755.....REINFORCEMENT DETAILS OF PRECAST POST TENSIONED PORTAL BEAM FOR PORTAL PIER DPP211 (SHEET 32 OF 2) | | 36. 022077-BSRP-CR2-C-VD-0-30-1756.....REINFORCEMENT DETAILS OF PRECAST POST TENSIONED PORTAL BEAM FOR PORTAL PIER DPP211 (SHEET 33 OF 2) | |
| 37. 022077-BSRP-CR2-C-VD-0-30-1757.....REINFORCEMENT DETAILS OF PRECAST POST TENSIONED PORTAL BEAM FOR PORTAL PIER DPP211 (SHEET 34 OF 2) | | 38. 022077-BSRP-CR2-C-VD-0-30-1758.....REINFORCEMENT DETAILS OF PRECAST POST TENSIONED PORTAL BEAM FOR PORTAL PIER DPP211 (SHEET 35 OF 2) | | 39. 022077-BSRP-CR2-C-VD-0-30-1759.....REINFORCEMENT DETAILS OF PRECAST POST TENSIONED PORTAL BEAM FOR PORTAL PIER DPP211 (SHEET 36 OF 2) | | 40. 022077-BSRP-CR2-C-VD-0-30-1760.....REINFORCEMENT DETAILS OF PRECAST POST TENSIONED PORTAL BEAM FOR PORTAL PIER DPP211 (SHEET 37 OF 2) | | 41. 022077-BSRP-CR2-C-VD-0-30-1761.....REINFORCEMENT DETAILS OF PRECAST POST TENSIONED PORTAL BEAM FOR PORTAL PIER DPP211 (SHEET 38 OF 2) | | 42. 022077-BSRP-CR2-C-VD-0-30-1762.....REINFORCEMENT DETAILS OF PRECAST POST TENSIONED PORTAL BEAM FOR PORTAL PIER DPP211 (SHEET 39 OF 2) | |
| 43. 022077-BSRP-CR2-C-VD-0-30-1763.....REINFORCEMENT DETAILS OF PRECAST POST TENSIONED PORTAL BEAM FOR PORTAL PIER DPP211 (SHEET 40 OF 2) | | 44. 022077-BSRP-CR2-C-VD-0-30-1764.....REINFORCEMENT DETAILS OF PRECAST POST TENSIONED PORTAL BEAM FOR PORTAL PIER DPP211 (SHEET 41 OF 2) | | 45. 022077-BSRP-CR2-C-VD-0-30-1765.....REINFORCEMENT DETAILS OF PRECAST POST TENSIONED PORTAL BEAM FOR PORTAL PIER DPP211 (SHEET 42 OF 2) | | 46. 022077-BSRP-CR2-C-VD-0-30-1766.....REINFORCEMENT DETAILS OF PRECAST POST TENSIONED PORTAL BEAM FOR PORTAL PIER DPP211 (SHEET 43 OF 2) | | 47. 022077-BSRP-CR2-C-VD-0-30-1767.....REINFORCEMENT DETAILS OF PRECAST POST TENSIONED PORTAL BEAM FOR PORTAL PIER DPP211 (SHEET 44 OF 2) | | 48. 022077-BSRP-CR2-C-VD-0-30-1768.....REINFORCEMENT DETAILS OF PRECAST POST TENSIONED PORTAL BEAM FOR PORTAL PIER DPP211 (SHEET 45 OF 2) | |
| 49. 022077-BSRP-CR2-C-VD-0-30-1769.....REINFORCEMENT DETAILS OF PRECAST POST TENSIONED PORTAL BEAM FOR PORTAL PIER DPP211 (SHEET 46 OF 2) | | 50. 022077-BSRP-CR2-C-VD-0-30-1770.....REINFORCEMENT DETAILS OF PRECAST POST TENSIONED PORTAL BEAM FOR PORTAL PIER DPP211 (SHEET 47 OF 2) | | 51. 022077-BSRP-CR2-C-VD-0-30-1771.....REINFORCEMENT DETAILS OF PRECAST POST TENSIONED PORTAL BEAM FOR PORTAL PIER DPP211 (SHEET 48 OF 2) | | 52. 022077-BSRP-CR2-C-VD-0-30-1772.....REINFORCEMENT DETAILS OF PRECAST POST TENSIONED PORTAL BEAM FOR PORTAL PIER DPP211 (SHEET 49 OF 2) | | 53. 022077-BSRP-CR2-C-VD-0-30-1773.....REINFORCEMENT DETAILS OF PRECAST POST TENSIONED PORTAL BEAM FOR PORTAL PIER DPP211 (SHEET 50 OF 2) | | 54. 022077-BSRP-CR2-C-VD-0-30-1774.....REINFORCEMENT DETAILS OF PRECAST POST TENSIONED PORTAL BEAM FOR PORTAL PIER DPP211 (SHEET 51 OF 2) | |
| 55. 022077-BSRP-CR2-C-VD-0-30-1775.....REINFORCEMENT DETAILS OF PRECAST POST TENSIONED PORTAL BEAM FOR PORTAL PIER DPP211 (SHEET 52 OF 2) | | 56. 022077-BSRP-CR2-C-VD-0-30-1776.....REINFORCEMENT DETAILS OF PRECAST POST TENSIONED PORTAL BEAM FOR PORTAL PIER DPP211 (SHEET 53 OF 2) | | 57. 022077-BSRP-CR2-C-VD-0-30-1777.....REINFORCEMENT DETAILS OF PRECAST POST TENSIONED PORTAL BEAM FOR PORTAL PIER DPP211 (SHEET 54 OF 2) | | 58. 022077-BSRP-CR2-C-VD-0-30-1778.....REINFORCEMENT DETAILS OF PRECAST POST TENSIONED PORTAL BEAM FOR PORTAL PIER DPP211 (SHEET 55 OF 2) | | 59. 022077-BSRP-CR2-C-VD-0-30-1779.....REINFORCEMENT DETAILS OF PRECAST POST TENSIONED PORTAL BEAM FOR PORTAL PIER DPP211 (SHEET 56 OF 2) | | 60. 022077-BSRP-CR2-C-VD-0-30-1780.....REINFORCEMENT DETAILS OF PRECAST POST TENSIONED PORTAL BEAM FOR PORTAL PIER DPP211 (SHEET 57 OF 2) | |
| 61. 022077-BSRP-CR2-C-VD-0-30-1781.....REINFORCEMENT DETAILS OF PRECAST POST TENSIONED PORTAL BEAM FOR PORTAL PIER DPP211 (SHEET 58 OF 2) | | 62. 022077-BSRP-CR2-C-VD-0-30-1782.....REINFORCEMENT DETAILS OF PRECAST POST TENSIONED PORTAL BEAM FOR PORTAL PIER DPP211 (SHEET 59 OF 2) | | 63. 022077-BSRP-CR2-C-VD-0-30-1783.....REINFORCEMENT DETAILS OF PRECAST POST TENSIONED PORTAL BEAM FOR PORTAL PIER DPP211 (SHEET 60 OF 2) | | 64. 022077-BSRP-CR2-C-VD-0-30-1784.....REINFORCEMENT DETAILS OF PRECAST POST TENSIONED PORTAL BEAM FOR PORTAL PIER DPP211 (SHEET 61 OF 2) | | 65. 022077-BSRP-CR2-C-VD-0-30-1785.....REINFORCEMENT DETAILS OF PRECAST POST TENSIONED PORTAL BEAM FOR PORTAL PIER DPP211 (SHEET 62 OF 2) | | 66. 022077-BSRP-CR2-C-VD-0-30-1786.....REINFORCEMENT DETAILS OF PRECAST POST TENSIONED PORTAL BEAM FOR PORTAL PIER DPP211 (SHEET 63 OF 2) | |
| 67. 022077-BSRP-CR2-C-VD-0-30-1787.....REINFORCEMENT DETAILS OF PRECAST POST TENSIONED PORTAL BEAM FOR PORTAL PIER DPP211 (SHEET 64 OF 2) | | 68. 022077-BSRP-CR2-C-VD-0-30-1788.....REINFORCEMENT DETAILS OF PRECAST POST TENSIONED PORTAL BEAM FOR PORTAL PIER DPP211 (SHEET 65 OF 2) | | 69. 022077-BSRP-CR2-C-VD-0-30-1789.....REINFORCEMENT DETAILS OF PRECAST POST TENSIONED PORTAL BEAM FOR PORTAL PIER DPP211 (SHEET 66 OF 2) | | 70. 022077-BSRP-CR2-C-VD-0-30-1790.....REINFORCEMENT DETAILS OF PRECAST POST TENSIONED PORTAL BEAM FOR PORTAL PIER DPP211 (SHEET 67 OF 2) | | 71. 022077-BSRP-CR2-C-VD-0-30-1791.....REINFORCEMENT DETAILS OF PRECAST POST TENSIONED PORTAL BEAM FOR PORTAL PIER DPP211 (SHEET 68 OF 2) | | 72. 022077-BSRP-CR2-C-VD-0-30-1792.....REINFORCEMENT DETAILS OF PRECAST POST TENSIONED PORTAL BEAM FOR PORTAL PIER DPP211 (SHEET 69 OF 2) | |
| 73. 022077-BSRP-CR2-C-VD-0-30-1793.....REINFORCEMENT DETAILS OF PRECAST POST TENSIONED PORTAL BEAM FOR PORTAL PIER DPP211 (SHEET 70 OF 2) | | 74. 022077-BSRP-CR2-C-VD-0-30-1794.....REINFORCEMENT DETAILS OF PRECAST POST TENSIONED PORTAL BEAM FOR PORTAL PIER DPP211 (SHEET 71 OF 2) | | 75. 022077-BSRP-CR2-C-VD-0-30-1795.....REINFORCEMENT DETAILS OF PRECAST POST TENSIONED PORTAL BEAM FOR PORTAL PIER DPP211 (SHEET 72 OF 2) | | 76. 022077-BSRP-CR2-C-VD-0-30-1796.....REINFORCEMENT DETAILS OF PRECAST POST TENSIONED PORTAL BEAM FOR PORTAL PIER DPP211 (SHEET 73 OF 2) | | 77. 022077-BSRP-CR2-C-VD-0-30-1797.....REINFORCEMENT DETAILS OF PRECAST POST TENSIONED PORTAL BEAM FOR PORTAL PIER DPP211 (SHEET 74 OF 2) | | 78. 022077-BSRP-CR2-C-VD-0-30-1798.....REINFORCEMENT DETAILS OF PRECAST POST TENSIONED PORTAL BEAM FOR PORTAL PIER DPP211 (SHEET 75 OF 2) | |
| 79. 022077-BSRP-CR2-C-VD-0-30-1799.....REINFORCEMENT DETAILS OF PRECAST POST TENSIONED PORTAL BEAM FOR PORTAL PIER DPP211 (SHEET 76 OF 2) | | 80. 022077-BSRP-CR2-C-VD-0-30-1800.....REINFORCEMENT DETAILS OF PRECAST POST TENSIONED PORTAL BEAM FOR PORTAL PIER DPP211 (SHEET 77 OF 2) | | 81. 022077-BSRP-CR2-C-VD-0-30-1801.....REINFORCEMENT DETAILS OF PRECAST POST TENSIONED PORTAL BEAM FOR PORTAL PIER DPP211 (SHEET 78 OF 2) | | 82. 022077-BSRP-CR2-C-VD-0-30-1802.....REINFORCEMENT DETAILS OF PRECAST POST TENSIONED PORTAL BEAM FOR PORTAL PIER DPP211 (SHEET 79 OF 2) | | 83. 022077-BSRP-CR2-C-VD-0-30-1803.....REINFORCEMENT DETAILS OF PRECAST POST TENSIONED PORTAL BEAM FOR PORTAL PIER DPP211 (SHEET 80 OF 2) | | 84. 022077-BSRP-CR2-C-VD-0-30-1804.....REINFORCEMENT DETAILS OF PRECAST POST TENSIONED PORTAL BEAM FOR PORTAL PIER DPP211 (SHEET 81 OF 2) | |
| 85. 022077-BSRP-CR2-C-VD-0-30-1805.....REINFORCEMENT DETAILS OF PRECAST POST TENSIONED PORTAL BEAM FOR PORTAL PIER DPP211 (SHEET 82 OF 2) | | 86. 022077-BSRP-CR2-C-VD-0-30-1806.....REINFORCEMENT DETAILS OF PRECAST POST TENSIONED PORTAL BEAM FOR PORTAL PIER DPP211 (SHEET 83 OF 2) | | 87. 022077-BSRP-CR2-C-VD-0-30-1807.....REINFORCEMENT DETAILS OF PRECAST POST TENSIONED PORTAL BEAM FOR PORTAL PIER DPP211 (SHEET 84 OF 2) | | 88. 022077-BSRP-CR2-C-VD-0-30-1808.....REINFORCEMENT DETAILS OF PRECAST POST TENSIONED PORTAL BEAM FOR PORTAL PIER DPP211 (SHEET 85 OF 2) | | 89. 022077-BSRP-CR2-C-VD-0-30-1809.....REINFORCEMENT DETAILS OF PRECAST POST TENSIONED PORTAL BEAM FOR PORTAL PIER DPP211 (SHEET 86 OF 2) | | 90. 022077-BSRP-CR2-C-VD-0-30-1810.....REINFORCEMENT DETAILS OF PRECAST POST TENSIONED PORTAL BEAM FOR PORTAL PIER DPP211 (SHEET 87 OF 2) | |
| 91. 022077-BSRP-CR2-C-VD-0-30-1811.....REINFORCEMENT DETAILS OF PRECAST POST TENSIONED PORTAL BEAM FOR PORTAL PIER DPP211 (SHEET 88 OF 2) | | 92. 022077-BSRP-CR2-C-VD-0-30-1812.....REINFORCEMENT DETAILS OF PRECAST POST TENSIONED PORTAL BEAM FOR PORTAL PIER DPP211 (SHEET 89 OF 2) | | 93. 022077-BSRP-CR2-C-VD-0-30-1813.....REINFORCEMENT DETAILS OF PRECAST POST TENSIONED PORTAL BEAM FOR PORTAL PIER DPP211 (SHEET 90 OF 2) | | 94. 022077-BSRP-CR2-C-VD-0-30-1814.....REINFORCEMENT DETAILS OF PRECAST POST TENSIONED PORTAL BEAM FOR PORTAL PIER DPP211 (SHEET 91 OF 2) | | 95. 022077-BSRP-CR2-C-VD-0-30-1 | | | |